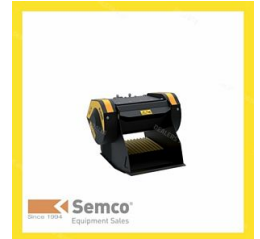


2017 MB MB-C50 S2

Details

Price:	POA
Dealer Stock #:	MB-C50S2
New / Used:	Dealer New



Seller Details



Name:	Semco Equipment Sales
Phone:	(02) 8311 4087
State:	NSW
Suburb:	North St Marys
Postcode:	2760

Description

Semco Group is a full-service heavy equipment sale and service organisation with locations in Sydney, Melbourne, Brisbane, Newcastle, Queanbeyan and Goulburn. MB-C50 crusher bucket crusher by MB for 4~10 tonne hydraulic excavators. Suitable for demolition, road construction, recycling, land reclamation. The MB-C50 crusher bucket has a total dimension of 1230 x 1000 x 800 mm and a of 750 Kg without coupler. The front aperture of jaw is 600 x 250 mm, and the output can be regulated by means of shims between 15~70 mm. The bucket has a loading capacity of 0.25 m3. For more information contact SATCH 1800 685 525

Product Details

Type	Dealer New
Year	2017
Make	MB
Model	MB-C50 S2
Registration Date	31 August 2017

Further Details

configuration	
Item Condition	Excellent



Semco®
Equipment Sales