

2025 North East Engineering Tag

Details

Price: POA
Dealer Stock #: 2AXLE
New / Used: Dealer New



Seller Details



Name: Northeast Isuzu
Shepparton
Phone: (03) 4831 8018
State: VIC
Suburb: Shepparton
Postcode: 3630

Description

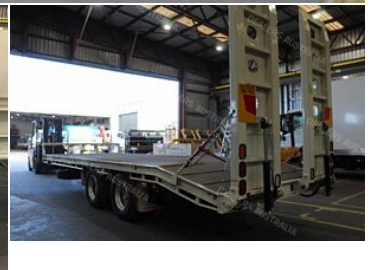
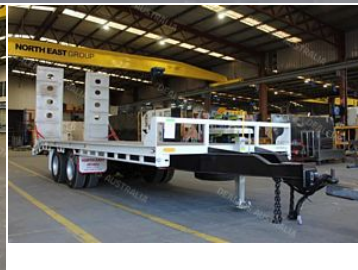
New NEE Dual Axle Plant Trailer Immediate Delivery Heavy-duty trailer engineered for plant and machinery transport. The NEE Trailer is built for performance, durability, and safety ready to handle demanding worksites and heavy equipment with ease. Specifications: Gross Trailer Mass (GTM): 15,000 kg Aggregate Trailer Mass (ATM): 21,000 kg Axle Configuration: Dual axle Construction: Robust, fully welded steel chassis and deck Brakes: Full air trailer braking system with ABS Lighting: LED lighting system Ramps: Hydraulic loading ramps for efficient, safe equipment access Beavertail: Built-in beavertail for reduced loading angle Toolbox: Heavy-duty front-mounted toolbox for added functionality Access: Rear-mounted ladder with grab handles for safe deck access In stock and ready for immediate delivery. No wait times. The NEE is a high-spec, heavy-duty plant trailer built to work. Head Office: South Australia Sales Team New Trucks: Rick Menechella: Hayden Ramsay: Jason Pinneri Sani Julardzija: Used Trucks: : Liam Agostino: Lonsdale: Johnny Emanuele: Shelley Minney: This vehicle can be transported, for your convenience, to 1 of our 5 locations across South Australia and Victoria. (, Adelaide, Lonsdale, or). Advertised vehicles transported interstate will incur a minimal transportation charge above negotiated vehicle price. Price Includes Gst But Excludes Registration, Stamp Duty, Ctp Insurance And Other Government Or Statutory Charges Which Will Vary Between States/Territories And Will Depend On The Vehicles Specifications And/Or Intended Application. Please Contact One Of Our Sales Team For A Drive-Away Price. Trade In & Trade Up! Are you looking to sell or trade-in your vehicle? We will appraise your Truck, Ute or Car and in addition to the benefits of selling your vehicle to North East, we give you the best price possible! At North East, We have a dedicated Fleet department ready to take on any inquiry you throw their way. We can offer our fleet customers a variety of discounts, promotions, exclusive industry insights and more! Saving you thousands! Inquire today! Our In-house finance team will take care of your financial situation so you can get this truck on the road quicker, meaning more money in your pocket! We make purchasing a truck easy! We even have on-site Engineering and Paint & Panel ready to design, manufacture and paint your dream truck! You're in the right hands by trusting North East, South Australia's largest family owned and operated Truck Centre. Our promise to deliver a premium product to the Australian market has been proudly and consistently upheld. The measure of our commitment is reflected in the number of trucks on the road that bear our marque, and the number of successful companies relying on our trucks every day. When we talk about reliability, we're not just talking about trucks, but also about people and indeed our entire philosophy. In addition to our in-house Customer Care Centre, customers also have access to an extensive range of service and support programs designed to ensure that our truck ownership is a positive and rewarding experience for all concerned. When you drive away in at truck from North East, you'll have the entire crew behind you. Not just our Customer Care team, but every single one of us. Because reliability is everything, everything we do is about reliability. You'll see we're right behind you, even as we strive to stay ahead of everybody else. We are the one stop shop for everything automotive and stock the largest New & Used Trucks in South Australia. Contact us for all pre-loved Isuzu, Iveco, New Holland Construction, Case IH Tractors, Utes, SUVs, Hino, Mitsubishi Fuso, Fighter & Canter, Nissan UD, Acco, Mercedes, International, Mack and more! We stock all body types including, Tray Tops, 4x2s, 4x4s, 6x4s, 8x4s, Tautliner, Curtain slider, Fridge Trucks, Freezer Trucks, Tipper & Chippers, Flocon, Tilt Slider, Compactors, Cab Chassis, Prime Movers, Bin lifter, Pantech, Water Trucks and more! Ready to work and Ready to go! All enquiries welcome! We have an on-site body builder and paint shop and affordable on-site finances options available. Come see us first. ** Please check the vehicle features with us. We do our best to advertise features correctly but they can vary from vehicle to vehicle. North East will not be held responsible for features that are advertised incorrectly.

Product Details

Type	Dealer New
Year	2025
Make	North East Engineering
Model	Tag
Registration Date	N/A

Further Details

Colour	WHITE
Condition	New
Spare Tyres	INC.



**24/7 Finance Approval
For Eligible Clients**

T & C Apply

Call Eugene, Our Group Business Manager, today!
0455 967 832