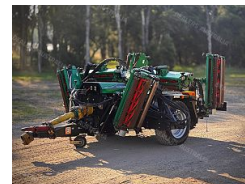


# 2019 Ransomes TG4650

## Details

**Price:** \$20,950 Ex. GST  
**Dealer Stock #:** DWL3120  
**New / Used:** Dealer Used



## Seller Details



**Name:** DWL Machinery  
**Phone:** (02) 8311 1321  
**Dealer** 8706626  
**License No:**  
**State:** NSW  
**Suburb:** Austral  
**Postcode:** 2179

## Sales Representatives

Jacob

## Description

TEXTRON RANSOMES TG4650 7 GANG CYLINDER MOWER 185" CUTTING WIDTH IMMACULATE CONDITION STAND BY UNIT- RARELY USED COST \$125 700 NEW, HUGE SAVING PRICE: \$20 950 PLUS GST FINANCE AVAILABLE OWN THIS MACHINE FROM ONLY \$99 PER WEEK AUSTRALIA WIDE & INTERNATIONAL DELIVERY LIKE OUR PAGE FOR ALL NEW LISTINGS: @dwlmachinery

----- DWL Machinery is a liquidation and clearance company who sell direct to the public. Most of our plant and machinery comes direct from Government departments, the Australia Defence Force, local councils, fleet & leasing companies, bank & finance matters. ----- -Textron Ransom's TG4650 gang cylinder mower - Unit is fitted with 7x hydraulic gangs which give a total cutting width of 185". -8 Blade gangs -Purchased new in 2019 -Sold complete with PTO shaft and hydraulic controls -Road registrable light setup -Direct from govt home well maintained fleet machine - Mudguards -Jockey wheel -Ring trailer hitch For anyone that doesn't know much about greens or reel mowers they give the best finish out of any mower on the market. The reel spins slicing the grass on a stationary blade giving the same type of cut as if you used a pair of scissors on the grass. Ever wondered how golfing greens or fairways have such perfect grass? Well it is due to the cutting action of these mowers. Turn your yard into a manicured lawn! ----- We are a bucket and attachment dealer for excavators and skid steers including your favourite brands like Digga, Norm engineering, Sureweld, Brian James Trailers, Auger Torque and ABS. -Photos are of the actual machine and form part of the description - Accepted payment methods: Internet transfer, cheque, cash, Paypal or credit card. Please note Paypal or credit card payments incur a 2% surcharge - Australia wide delivery and International shipping simply send us your location for a quote. Pick up is in Bringelly NSW Australia 2179 - Finance is available on all our equipment - Sale price is PLUS GST and a tax invoice will be supplied to the buyer -DWL will organise an OH&S risk assessment report for the machine purchased. Please allow \$216+GST which is Plant Assessors direct cost for the report. -A 4.4% buyer administration, packaging and handling charge will be added to the final sale price - We accept trade-in's, email us photos and details of the machines for valuations Feel free to contact Andrew from DWL Machinery on 0401873538 for any further questions about machinery, finance, trade-ins, attachments and delivery DWL3120

## Product Details

|                          |               |
|--------------------------|---------------|
| <b>Price</b>             | \$20,950      |
| <b>Type</b>              | Dealer Used   |
| <b>Year</b>              | 2019          |
| <b>Make</b>              | Ransomes      |
| <b>Model</b>             | TG4650        |
| <b>Registration Date</b> | 15 April 2025 |

## Further Details

|                            |           |
|----------------------------|-----------|
| <b>configuration</b>       |           |
| <b>Item</b>                | Excellent |
| <b>Condition</b>           |           |
| <b>Total Eng Power</b>     | 50        |
| <b>Engine Make</b>         | PTO       |
| <b>Transmission</b>        | Automatic |
| <b>Audio/Visual System</b> | N/A       |
| <b>Comms/Radio</b>         | N/A       |
| <b>Guidance/GPS</b>        | N/A       |
| <b>Front Tyre Size</b>     | Enquire   |
| <b>Front Tyre Type</b>     | Road      |
| <b>Front Tyre Cond</b>     | 80 %      |
| <b>Rear Tyre Size</b>      | Enquire   |
| <b>Rear Tyre Type</b>      | Road      |
| <b>Rear Tyre Cond</b>      | 80 %      |
| <b>Lighting</b>            | Yes       |
| <b>External Colour</b>     | Green     |
| <b>Warranty</b>            | Enquire   |



