

# 2023 Morooka MST80C

## Details

Price:	POA
Dealer Stock #:	590033
New / Used:	Dealer Demo



## Seller Details



Name:	Semco Equipment Sales
Phone:	(02) 8311 4087
State:	NSW
Suburb:	North St Marys
Postcode:	2760

## Description

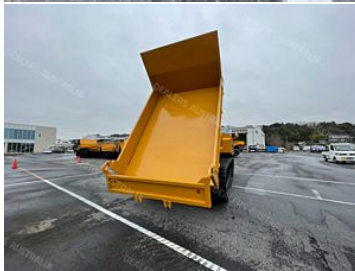
New Morooka 2023 MST80C Crawler Dump truck Operating Weight: 11,400kg | Payload: 8,000kg Cummins QSB6.7-4E, 6.7L 225hp(168kW) Tier 4 Final Stage V Turbo Diesel Engine 2-speed Hydrostatic transmission 0-6kmh / 0-9kmh. Heavy duty 700mm rubber tracks. Enclosed Airconditioned ROPS Cabin, Air Suspension seat, New Single Lever Joystick control for all Drive and Dump functions. New Colour display, AM/FM/AUX Radio, Headlights, Indicators Easy access to regular maintenance areas. 4.2m3 heaped body, standard rear dump body with drop sides., HARDOX Construction Dimensions(LxWxH): 5840mm x 2700mm x 2950mm Call Semco for a quote 1800 685 525

## Product Details

Type	Dealer Used
Year	2023
Make	Morooka
Model	MST80C
Registration Date	4 April 2023

## Further Details

configuration	Dump truck
Hours	5
Off Highway Truck Config	Dump truck
Item Condition	New



- function of each button**
1. Horn button
  2. N/A
  3. Dump control dial
  4. 2-Speed switching (Hi) button
  5. 2-Speed switching (Lo) button
  6. Super slow mode button
  7. Trigger (for dump control)

OM-54012-0040-1

**MOROOKA**

#### Spin turn



OM-54012-0255-1

To make a spin turn to the left, tilt the travel lever in the "L" direction.

To make a spin turn to the right, tilt the travel lever in the "R" direction.

#### Super Slow Mode



OM-54012-0120

Press super slow mode button (6) with the Hi-Lo speed range selector is set in "LO" position and the travel lever is set in the "N" position, the super slow mode lamp will appear on the monitor display screen and the machine travels slower than usual.

To cancel the mode, set the travel lever to the "N" (NEUTRAL) position and press the button again.

Alternatively, setting the travel speed range to "Hi" speed will cancel the super slow mode. In this case, the machine is set in Hi-speed, so be careful of speed changes

#### Dump control



OM-54012-0400

OM-54012-0070

When operating the dump body, operate the dump control dial while holding the trigger of the travel and dump control lever.

A (DOWN) : The dump body is lowered.  
N (NEUTRAL) : The dump body stops moving and holds the position.  
B (UP) : The dump body is raised.

When the control dial is released, it automatically returns to the "N" (Neutral) position